



# A Status Update Resilient Hospital Reference Model (RHRM) MBSE Project



<https://www.incose-cc.org>



JAMES A. JOHNSON  
DOUGLAS E. ANDERSON  
CAREN C. ROSSOW

# HEALTH SYSTEMS THINKING

A PRIMER

# HEALTH SYSTEMS THINKING

A PRIMER



**JAMES A. JOHNSON, PhD, MPA, MSc**

Professor, School of Health Sciences

Central Michigan University

and

Visiting Professor, St. George's University

Grenada, West Indies

**DOUGLAS E. ANDERSON, DHA, MSS,**

**MBA, LFACHE**

Adjunct Professor and Healthcare Consultant

Washington, DC Metro Area



# Resilient Hospital Systems Engineering Team (RHSET) Members and Key Stakeholders





<https://www.infragard.org/>



National Association of  
County and City Health Officials

<https://www.naccho.org/>



SDMPH

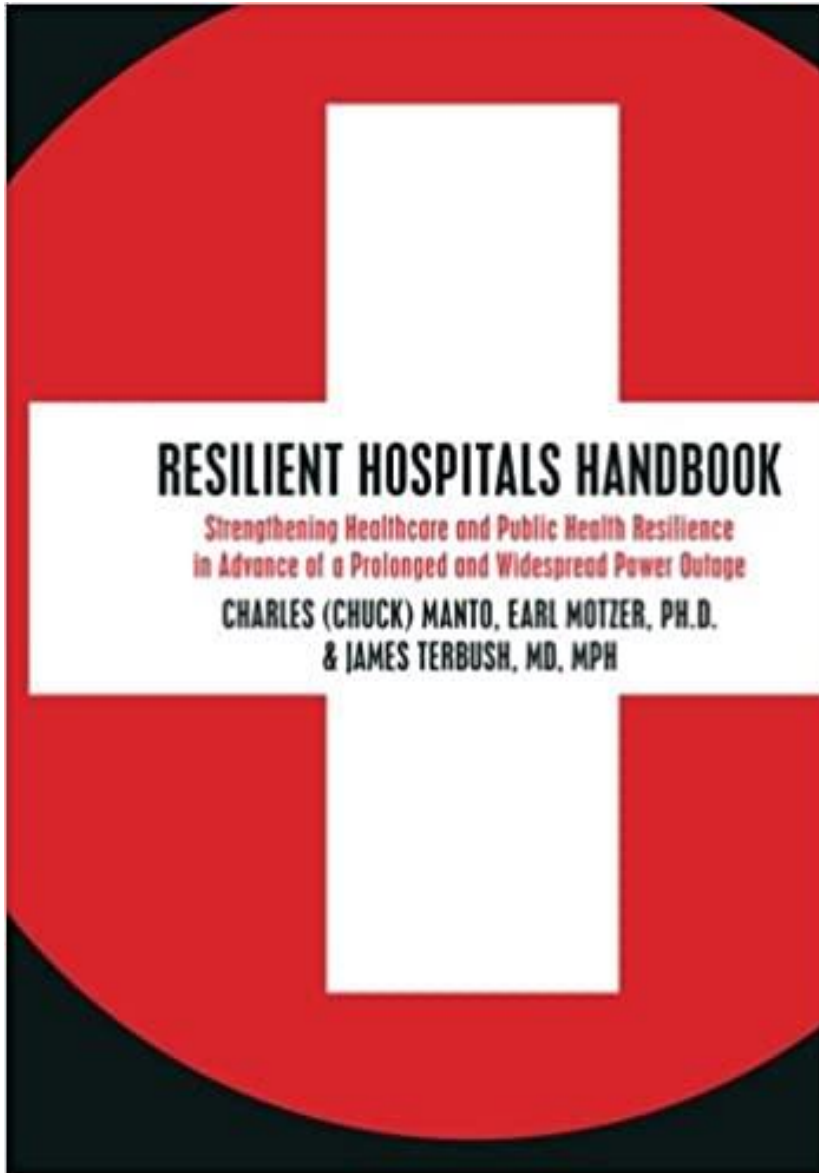
Society for Disaster Medicine and Public Health  
Achieving Global Health Security

<https://sdmph.org/>



# RHRM MBSE Project - Background

- The **Resilient Hospital Reference Model (RHRM) Model-Based Systems Engineering (MBSE)** project was motivated by work detailed in the booklet, "Resilient Hospital Handbook", authored by INCOSE member Charles Manto; as well as Earl Motzer, PhD; and James Terbush, MD, MPH.
- Following its publication, in a series of subsequent discussions, it was decided that follow-up systems engineering work could provide added value, based on "model-based" contributions from several INCOSE working groups, IEEE, and FBI/InfraGard, in collaboration with key stakeholders from SDMPH, NACCHO, and other healthcare organizations.
- The RHRM MBSE project has been underway since 2018; building on 2017 initial efforts of a "Microgrid Reference Model" MBSE project.
- As work continues on the Microgrid Reference Model MBSE project, the work of the RHRM MBSE project has garnered significant interest from several healthcare-related organizations.



Buy at Amazon:

<https://tinyurl.com/qljruxj>

Free Working PDF at InfraGard:

<https://tinyurl.com/y3sqv4y8>



# Project Purpose, Goal, and Vision

**Project Purpose:** To develop a *generic Resilient Hospital Reference Model (RHRM)* to enhance current planning for preparedness, protection, prevention, response, mitigation, and recovery; initially as they pertain to hospital prolonged power outages.

**Project Goal:** To provide all hospitals with a **Resilient Hospital decision support capability** (leveraging Model-Based Systems Engineering (MBSE) techniques and tools) that hospitals can use to enhance planning before, during, and after a prolonged power outage.

**Project Vision:** This Resilient Hospital decision support capability can be **replicated and scaled**; to offer the same kinds of model-based tools and resources at the public health care local, tribal, state, regional, and national levels.

# Resilient Hospital Reference Models

## -- Enable **hospitals in general** to:

- Collaboratively model (i.e., describe and diagram, in a common repository) and share reference data and information about hospital critical operations.
- Establish a common reference framework.
- Effectively and efficiently coordinate the provision of resources and services.

-- Will enable planning and decision-making in compliance with all local, tribal, state, regional, and national guidance, requirements, and standards (i.e., references).

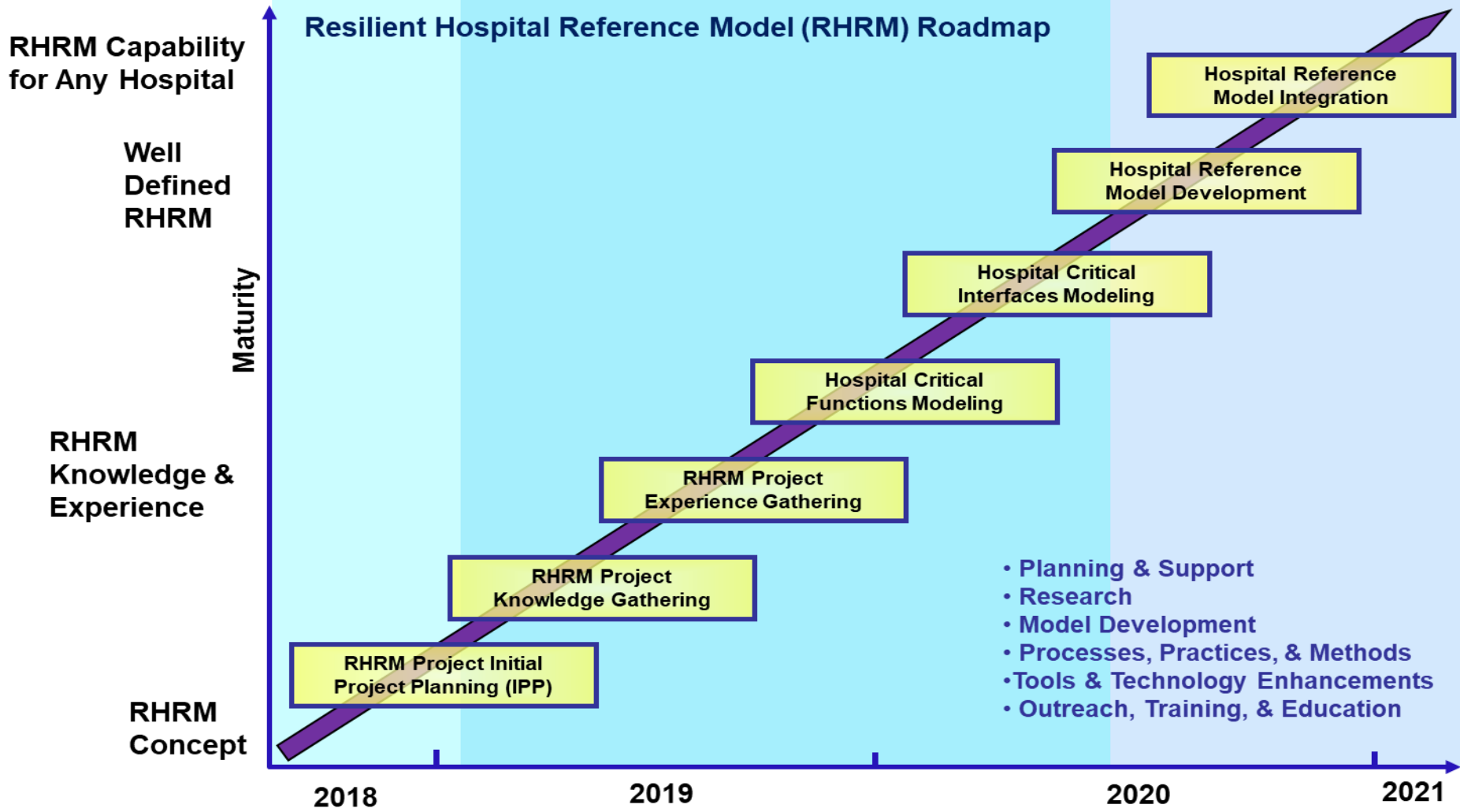
-- Meant to be flexible & scalable, to enable hospitals to successfully integrate their operational references into broader health care coalition catastrophic event planning, execution, and evaluation frameworks, as well as national emergency healthcare response systems.



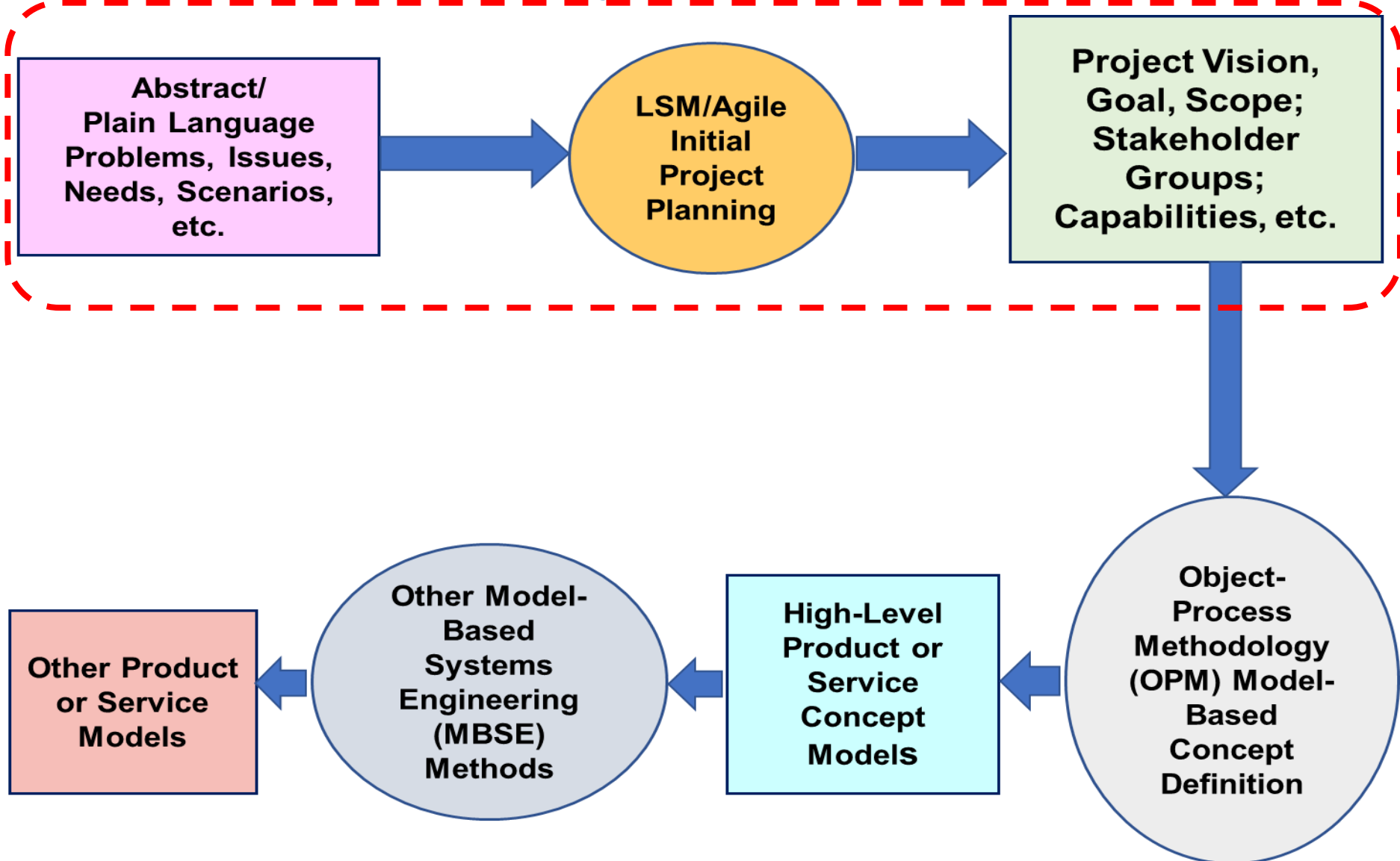
# RHRM MBSE Project Roadmap



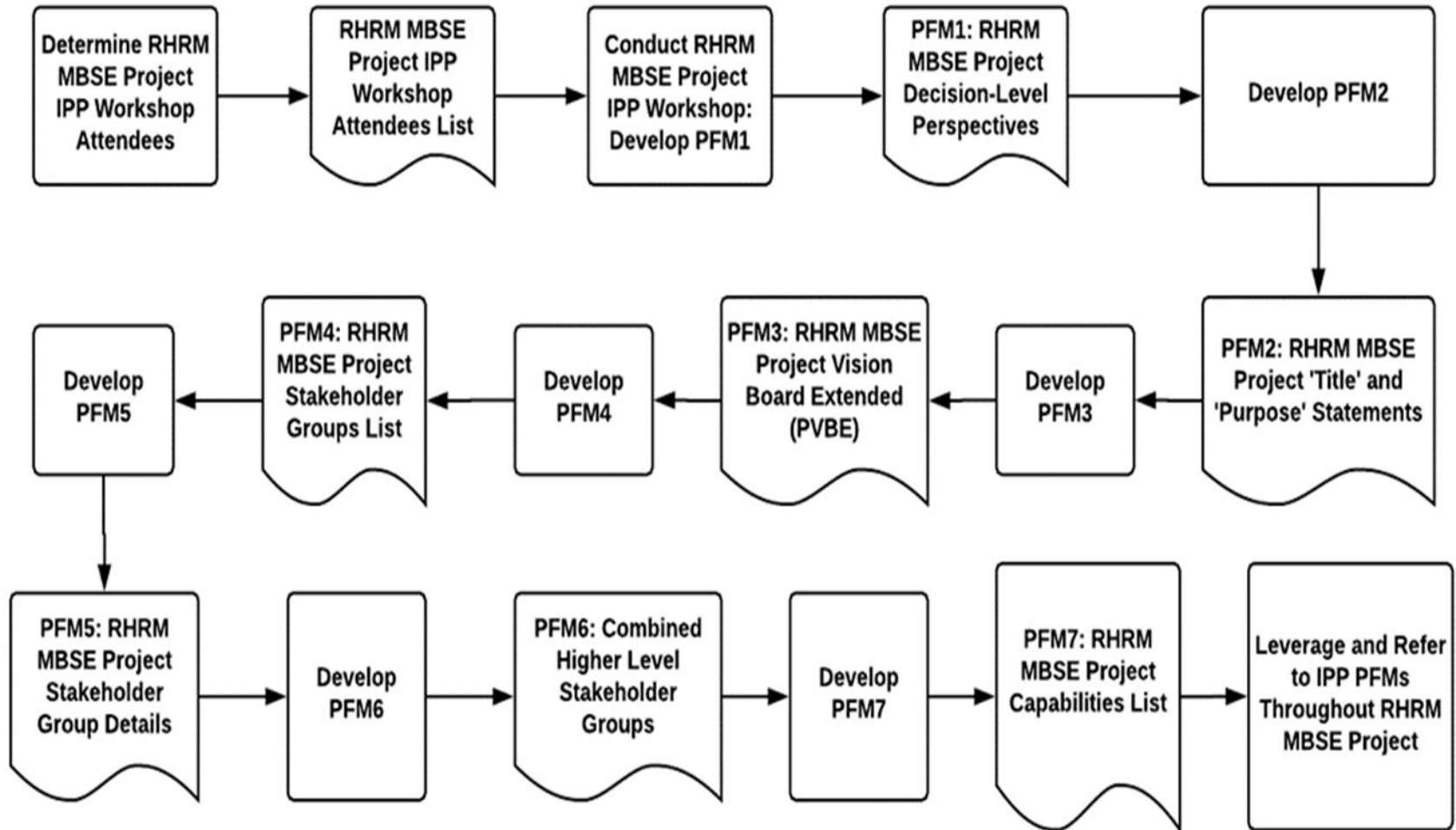
RHRM Capability	Situational Awareness	Resource Readiness	Enhanced Interoperability	Assured Communications	Sharable Knowledge	Assured Compliance
-----------------	-----------------------	--------------------	---------------------------	------------------------	--------------------	--------------------



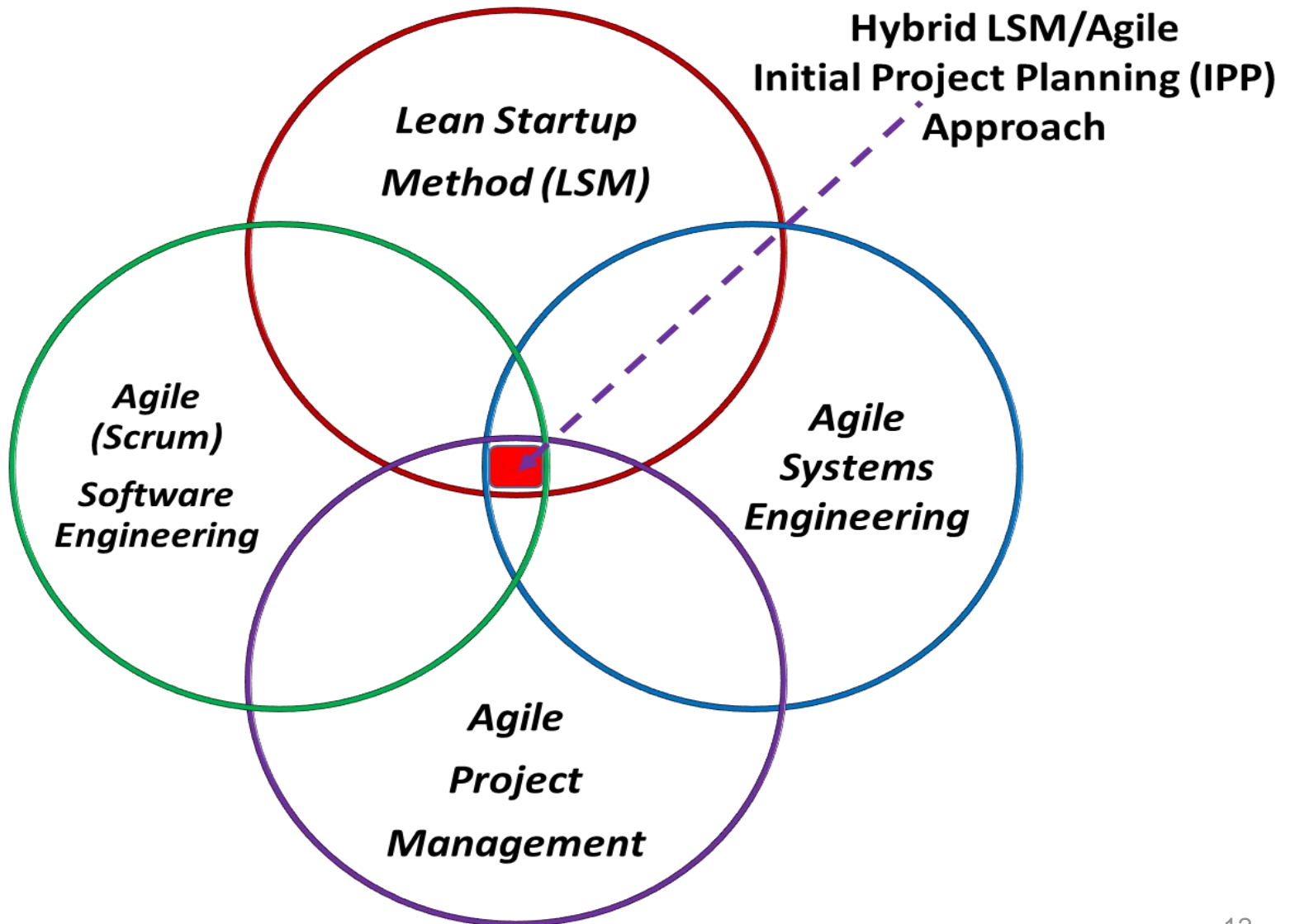
# RHRM MBSE Project Flow



# RHRM MBSE Project IPP



# RHRM MBSE Project IPP



# RHRM MBSE Project IPP



<https://www.lucidchart.com>

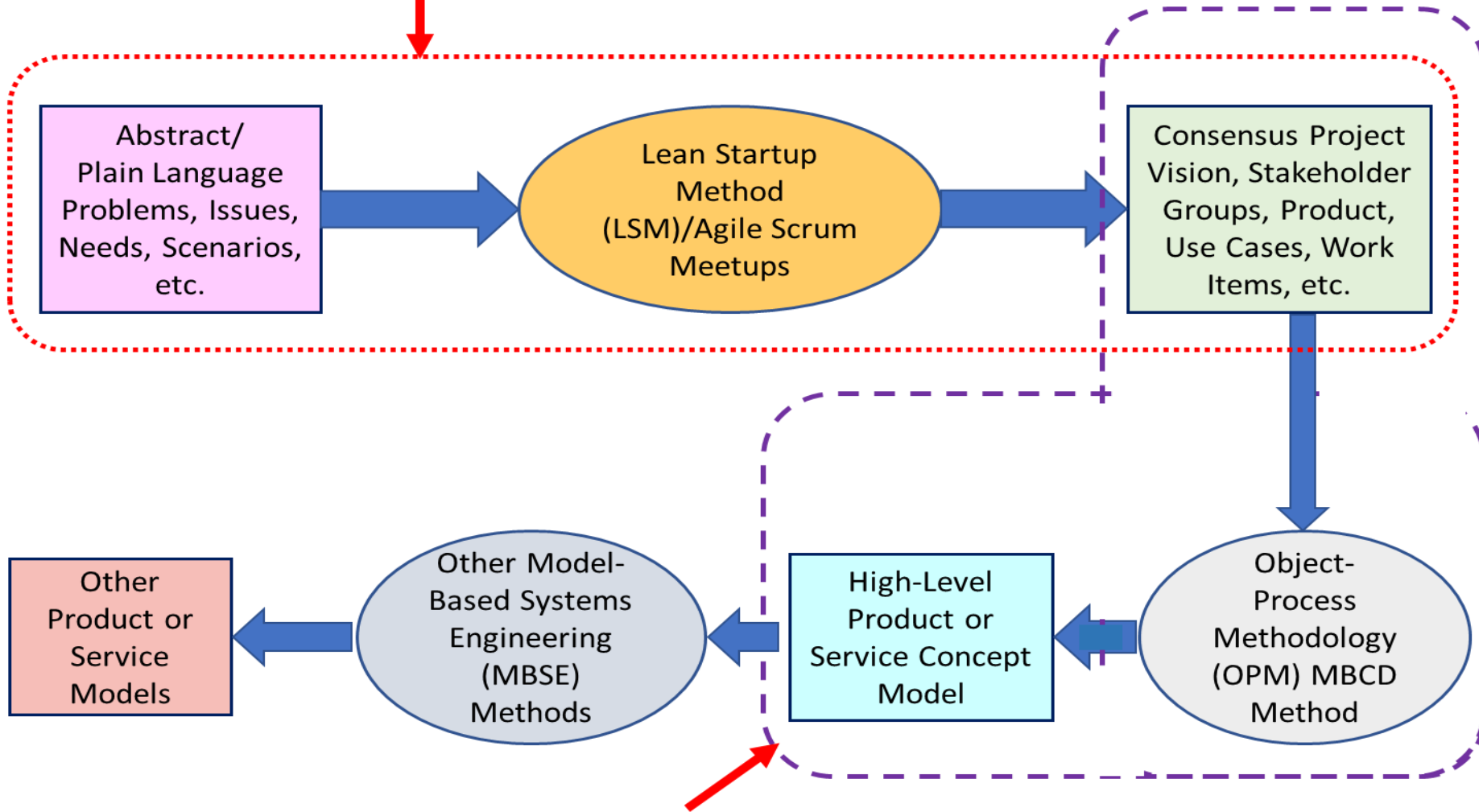


## **INCOSE CONNECT RHRM MBSE Project IPP Materials:**

- CONNECT Login
- Working Groups (menu)
- Object-Oriented SE Method
- Resilient Hospital Reference Model (RHRM) Project
- RHRM Project IPP

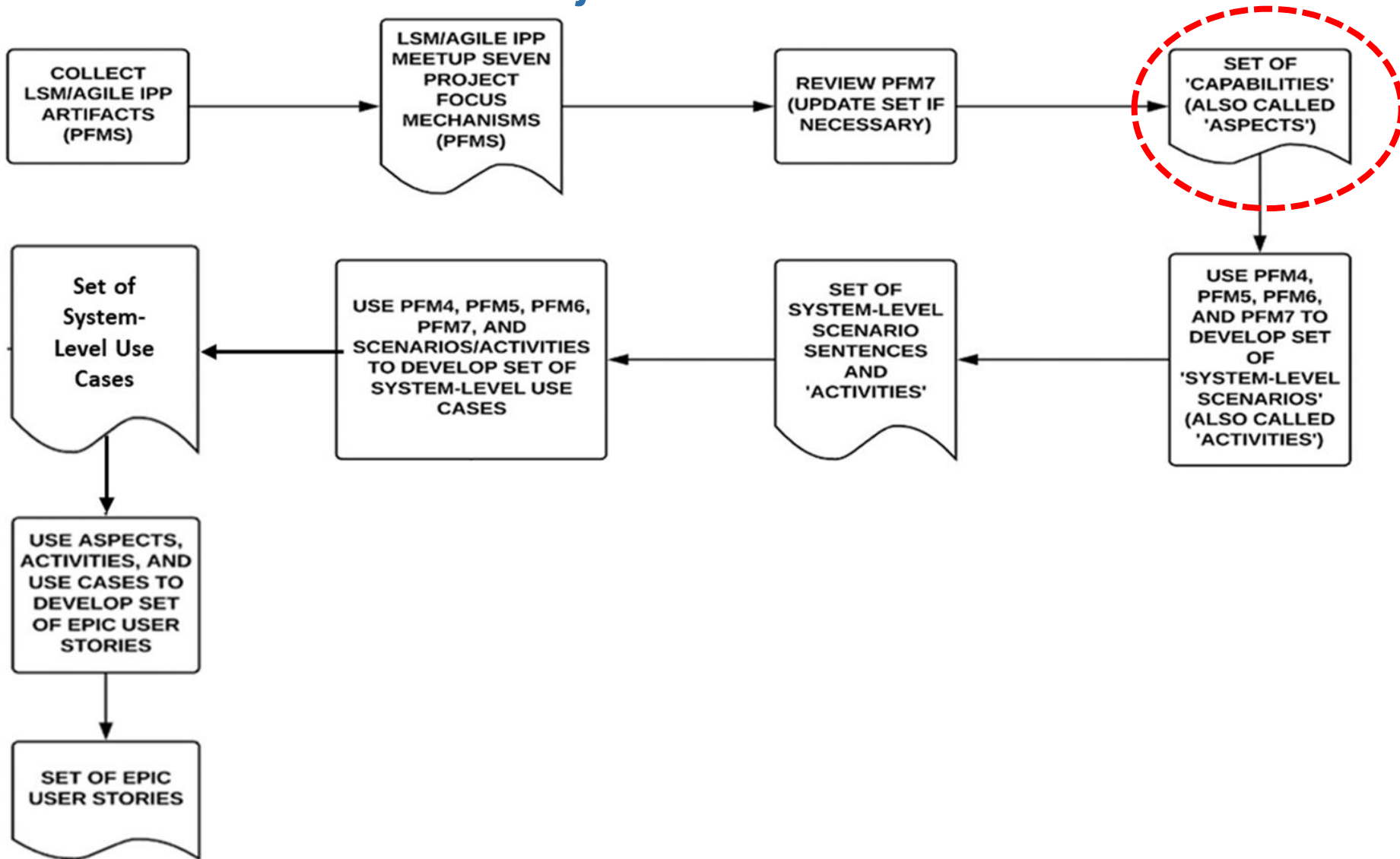
# RHRM MBSE Project Flow

*LSM/Agile IPP "Meetup, Clean Up, and Post Up"*



*OPM-Based "Model-Based Concept Definition (MBCD)"*

# RHRM MBSE Project IPE



# RHRM MBSE Project IPE

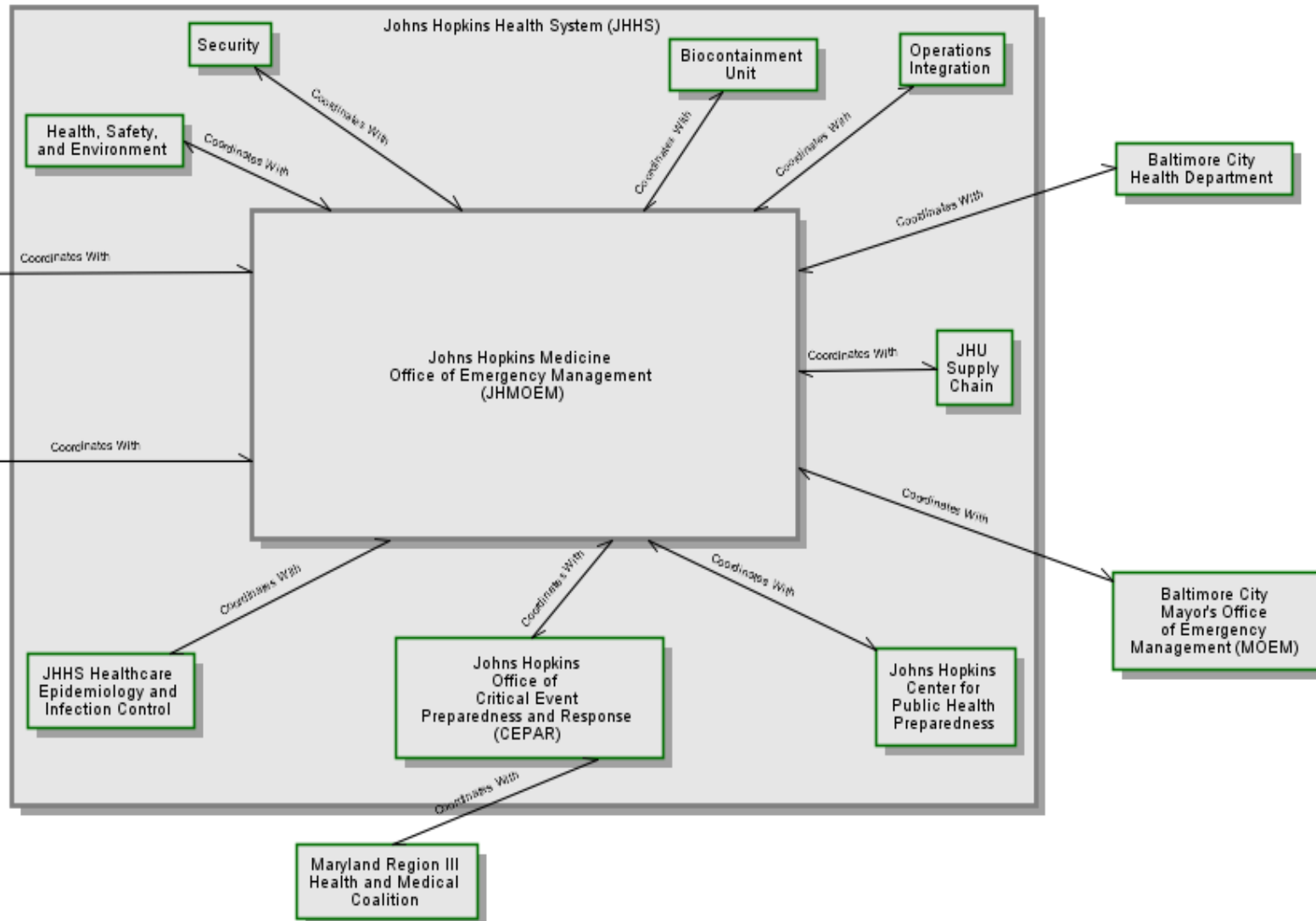


20200210 Meetup and News PFM7 Capabilities List	PFM7s as Gerund Statements
Assess Impact on Patient Care	Assessing Impact on Patient Care
Maintain Public Communications	Maintaining Public Communications
Provide Backup Power	Providing Backup Power
Test Continuity of Power	Testing Continuity of Power
Manage Equipment and Medical Care Supplies	Managing Equipment and Medical Care Supplies
Provide Alternative Fire Safety	Providing Alternative Fire Safety
Provide Alternative Waste Disposal	Providing Alternative Waste Disposal
Track Lessons Learned	Tracking Lessons Learned
Support telemedicine	Supporting telemedicine
Assess Power-Related Threats	Assessing Power-Related Threats
Determine Feasible Services	Determining Feasible Services
Evacuate Patients	Evacuating Patients
Family Support	Supporting Families
Respond to Zero-Power Situation	Responding to Zero-Power Situation
Provide Critical In-Home Services	Providing Critical In-Home Services
Assess Power-Related Threats	Assessing Power-Related Threats
Allocate Limited Resource (Steam)	Allocating Limited Resource (Steam)

**Excerpt from RHRM MBSE Project IPP/IPE Workbook**



# RHRM MBSE Project IPE

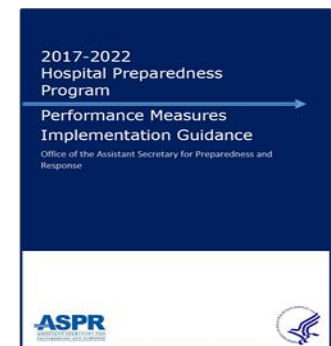
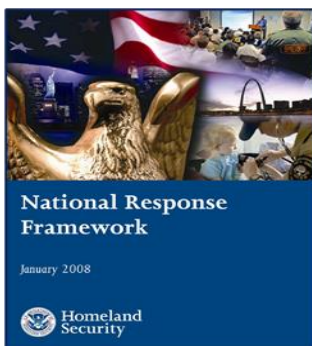
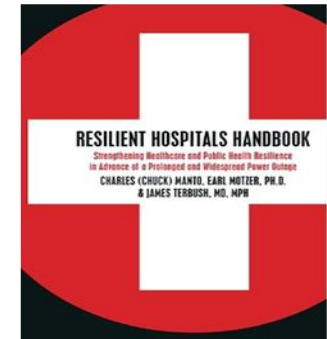
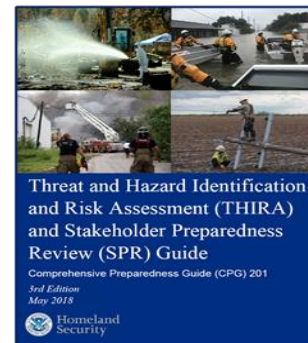
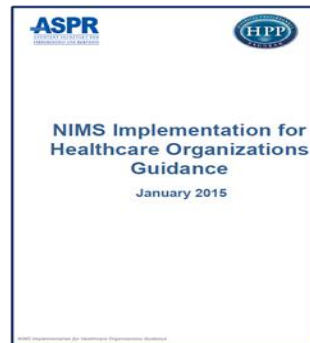
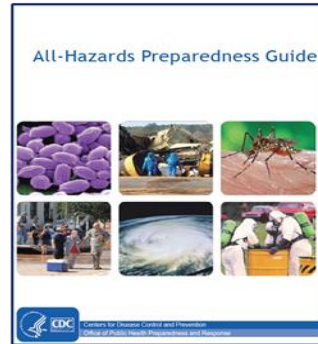
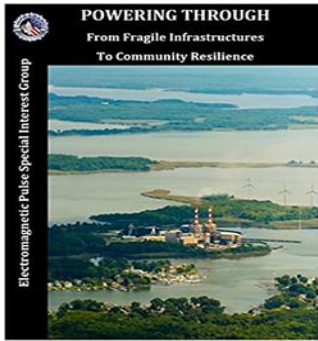


# RHRM MBSE Project - Events



- Three LSM/Agile RHRM MBSE Initial Project Planning (IPP) Workshops at JHU/APL **Apr-Oct 2018**.
  - INCOSE, IEEE, FBI/InfraGard, SDMPH, NACCHO, other Healthcare Leaders
- **2018** and **2019** Project Presentations/Tutorials:
  - INCOSE Chesapeake Chapter - **Feb 2018**
  - NASA Goddard - **Mar 2018**
  - GLRC 2018 - **Oct 2018**
  - EnergyTech 2018 - **Oct 2018**
  - INCOSE HWGSEC 2019 - **May 2019**
  - EnergyTech 2019/GLRC 2019 - **Oct 2019**
- Paper presented at SDMPH Meeting in Puerto Rico - **Feb 2019**
- Project Team Member at SDMPH National Meeting - **Aug 2019**
- Project Orientation and Other Sessions at INCOSE IW20 - **Jan 2020**
- Project Briefing at Colorado South Central Healthcare Coalition - **Jan 2020**
- Project Status Briefing to the INCOSE Requirements Working Group - **Apr 2020**
- Project Status Briefing to the INCOSE Chesapeake Chapter - **Jun 2020**
- Attending two upcoming virtual NACCHO Conferences - **Jul and Aug 2020**
- Proposed Briefing and Tutorial at INCOSE GLRC14 in Detroit, MI - **Sep 2020**
- On the schedule for INCOSE HWGSEC 2020 in MSP, MN - **Oct 2020**

# References



# Points of Contact



## Project Team Lead:

**Howard Lykins**

**[howard.lykins@verizon.net](mailto:howard.lykins@verizon.net)**

## Other Project Contacts:

**John Juhasz**

**[telepath.juhasz@yahoo.com](mailto:telepath.juhasz@yahoo.com)**

**Mike Pafford**

**[mepafford@verizon.net](mailto:mepafford@verizon.net)**



<https://www.incose-cc.org>

